



30x30 cm. 11.8x11.8 inches



29,3x29,3 cm / 11.5x11.5 inches



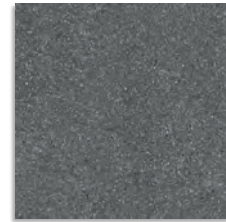
Farnese Humo
G.154
Farnese-R Humo
G.158



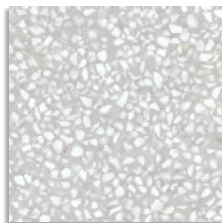
Farnese Cemento
G.154
Farnese-R Cemento
G.158



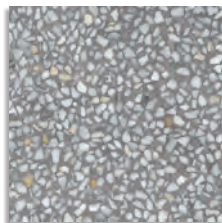
Farnese Crema
G.154
Farnese-R Crema
G.158



Farnese Grafito
G.154
Farnese-R Grafito
G.158



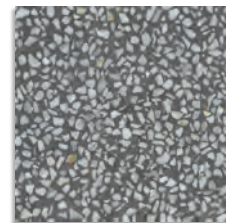
Amalfi Humo
G.154
Amalfi-R Humo
G.158



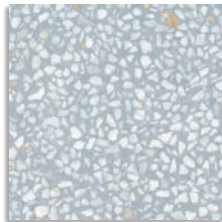
Amalfi Cemento
G.154
Amalfi-R Cemento
G.158



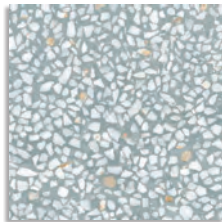
Amalfi Crema
G.154
Amalfi-R Crema
G.158



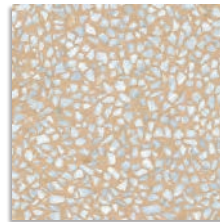
Amalfi Grafito
G.154
Amalfi-R Grafito
G.158



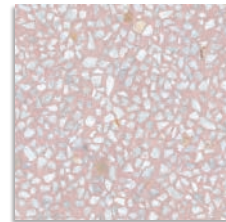
Amalfi Azul
G.154
Amalfi-R Azul
G.158



Amalfi Mar
G.154
Amalfi-R Mar
G.158



Amalfi Beige
G.154
Amalfi-R Beige
G.158



Amalfi Rosa
G.154
Amalfi-R Rosa
G.158

El peldaño y el gradone pueden servirse con o sin rayado de hendidura. También disponibles en ángulo. The Step Tread and gradone can be sold with or without the ribbed notch. Angle is also available.

ANTIDESLIZANTE. Con el fin de dar una mayor seguridad en aquellas áreas transitables, cuyas condiciones de humedad y pendientes son mayores de lo habitual, hemos realizado las pruebas de ensayo según las normas: UNE 41901:2017 EX, UNE 41902:2017 EX, DIN 51130, DIN 51097, DCOF, BS 7976-2:2002. Para más información, consultar nuestro departamento técnico.

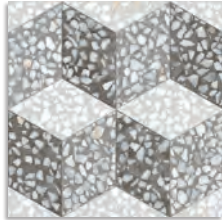
SLIP RESISTANCE. With the purpose of providing increased safety in areas of pedestrian foot traffic where moisture and/or slopes are greater than normal, we have carried out tests according to the norms: UNE 41901:2017 EX, UNE 41902:2017 EX, DIN 51130, DIN 51097, DCOF, BS 7976-2:2002. For more information on this, contact our Technical Department.



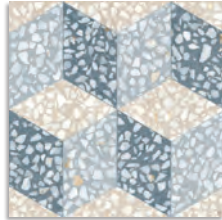
CL 2
R 10
CL B
+ 0.42
+ 36

| FARNESE | | | | CAJA / BOX | | | | PALET / PALLET | | | |
|---------|-------|---------------|------------------|-----------------|----------------|-------|--------|----------------|----------------|--------|---------|
| | | FORMATOS | SIZE | PIEZAS / PIECES | M ² | ML | KG | CAJA / BOX | M ² | ML | KG |
| | 8,2 | 30x30cm. | 11.8x11.8 inches | 11 | 0,99 | - | 18,58 | 64 | 63,36 | - | 1188,80 |
| | 8,2 | 29,3x29,3 cm. | 11.5x11.5 inches | 11 | 0,94 | - | 17,821 | 64 | 60,416 | - | 1140,54 |
| | G.32 | 9,4x30 cm. | 3.7x11.8 inches | 40 | - | 12 | 21,15 | 64 | - | 768 | 1353,60 |
| | G.912 | 9,4x29,3 cm. | 3.7x11.5 inches | 40 | - | 11,72 | 20,65 | 64 | - | 750,08 | 1321,60 |
| | G.56 | 30x30cm. | 11.8x11.8 inches | 11 | - | 3,30 | 18,58 | - | - | - | - |
| | G.77 | 29,3x29,3 cm. | 11.5x11.5 inches | 11 | - | 3,22 | 17,821 | - | - | - | - |
| | G.80 | 30x30cm. | 11.8x11.8 inches | 3 | - | 0,90 | 6,27 | - | - | - | - |
| | G.81 | 29,3x29,3 cm. | 11.5x11.5 inches | 3 | - | 0,879 | 6,05 | - | - | - | - |

30x30 cm. 11.8x11.8 inches



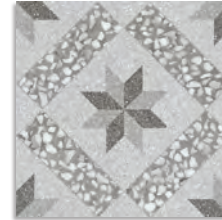
Cavour Cemento
G.192



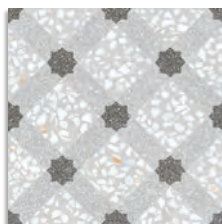
Cavour Azul
G.192



Gadner Crema
G.192



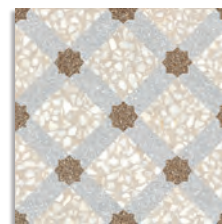
Gadner Cemento
G.192



Mancini Humo
G.192



Mancini Cemento
G.192



Mancini Crema
G.192



Mancini Grafito
G.192



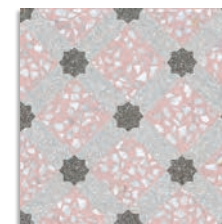
Mancini Azul
G.192



Mancini Mar
G.192



Mancini Beige
G.192



Mancini Rosa
G.192

El peldaño y el gradone pueden servirse con o sin rayado de hendidura. También disponibles en ángulo.
The Step Tread and gradone can be sold with or without the ribbed notch. Angle is also available.

ANTIDESLIZANTE. Con el fin de dar una mayor seguridad en aquellas áreas transitables, cuyas condiciones de humedad y pendientes son mayores de lo habitual, hemos realizado las pruebas de ensayo según las normas: UNE 41901:2017 EX, UNE 41902:2017 EX, DIN 51130, DIN 51097, DCOF, BS 7976-2:2002. Para más información, consultar nuestro departamento técnico.

SLIP RESISTANCE. With the purpose of providing increased safety in areas of pedestrian foot traffic where moisture and/or slopes are greater than normal, we have carried out tests according to the norms: UNE 41901:2017 EX, UNE 41902:2017 EX, DIN 51130, DIN 51097, DCOF, BS 7976-2:2002. For more information on this, contact our Technical Department.



CL 2
R 10
CL B
+ 0.42
+ 36

| FARNESE | | | | | CAJA / BOX | | | PALET / PALLET | | | |
|--|-------|---------------|------------------|-----------------|----------------|-------|--------|----------------|----------------|--------|---------|
| | | FORMATOS | SIZE | PIEZAS / PIECES | M ² | ML | KG | CAJA / BOX | M ² | ML | KG |
| | 8,2 | 30x30cm. | 11.8x11.8 inches | 11 | 0,99 | - | 18,58 | 64 | 63,36 | - | 1188,8 |
| | 8,2 | 29,3x29,3 cm. | 11.5x11.5 inches | 11 | 0,94 | - | 17,821 | 64 | 60,416 | - | 1140,54 |
| Rodapié cortado y biselado Cut and Bevelled skirting tile Farnese/Amalfi | G.32 | 9,4x30 cm. | 3.7x11.8 inches | 40 | - | 12 | 21,15 | 64 | - | 768 | 1353,6 |
| | G.912 | 9,4x29,3 cm. | 3.7x11.5 inches | 40 | - | 11,72 | 20,65 | 64 | - | 750,08 | 1321,6 |
| Peldaño / Step Tread | G.56 | 30x30cm. | 11.8x11.8 inches | 11 | - | 3,3 | 18,58 | - | - | - | - |
| | G.77 | 29,3x29,3 cm. | 11.5x11.5 inches | 11 | - | 3,22 | 17,821 | - | - | - | - |
| Gradone | G.80 | 30x30cm. | 11.8x11.8 inches | 3 | - | 0,9 | 6,27 | - | - | - | - |
| | G.81 | 29,3x29,3 cm. | 11.5x11.5 inches | 3 | - | 0,879 | 6,05 | - | - | - | - |

29,3x29,3 cm / 11.5x11.5 inches 



Apulia-R Crema
G.172



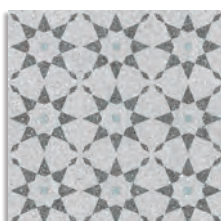
Aventino-R Crema
G.172



Molise-R Crema
G.172



Apulia-R Humo
G.172



Aventino-R Humo
G.172



Molise-R Grafito
G.172



(1) Quirinale-R Multicolor
G.172



(2) Apulia-R Multicolor
G.172

(1) Este modelo está compuesto por diseños diferentes para combinar de modo alterno, se sirven en la misma caja.
This model has different designs that are combined alternately, coming in the same box.

(2) Este modelo está compuesto por un solo diseño con variantes de color para combinar de modo alterno, se sirven en la misma caja.
This model have only one design with many colours that are combined alternately, coming in the same box.



Amalfi Rosa - 30x30 cm.