

# INTERNO



*IN CONTINUA EVOLUZIONE  
THE EVOLUTION CONTINUES*

# ABK

EMOZIONI IN SUPERFICIE

# INTERNO 9

*IN CONTINUA EVOLUZIONE  
THE EVOLUTION CONTINUES*

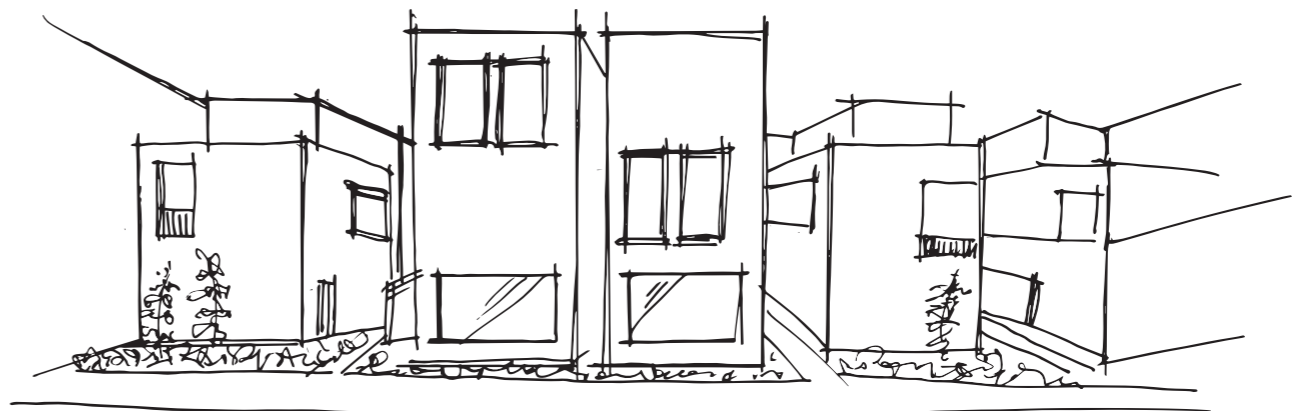
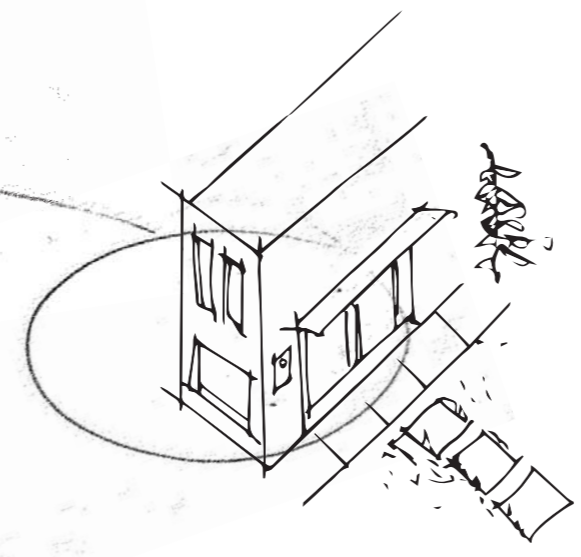
**ABK**  
EMOZIONI IN SUPERFICIE



# INTERNO 9

Immagina un complesso architettonico con uno stile moderno, minimalista, dove lo sguardo incontra strutture lineari, armonie di volumi, contrasti materici, anche su grandi superfici. L'eleganza della semplicità si amalgama all'irriverenza indomita del metallo che, con affascinante rudezza, si fa protagonista del paesaggio.

Imagine a contemporary residential complex with a minimalist feel, where the viewer's gaze is drawn to linear structures, harmonious forms, and contrasting textures. Stylish simplicity is paired with the untamed irreverence of weathering steel, which - with a stunning coarseness - becomes a key feature of the landscape.



# INTERNO 9

## MATCHING MATERIALS

Attraverso le molteplici ispirazioni offerte dalla gamma ABK, è possibile personalizzare ogni ambiente donandogli una sensazione materica sempre differente.

Metallo, pietra, marmo e legno si combinano sapientemente tra loro, dando vita a sorprendenti contaminazioni stilistiche per architetture estremamente contemporanee.

The many inspirations behind the ABK range can be used to customise any space and create constantly changing material effects.

Metal, stone, marble and wood are skilfully combined to create a surprising crossover style ideal for highly contemporary architectural solutions.



RUST

DARK

SILVER



PEARL

MUD

DUNE



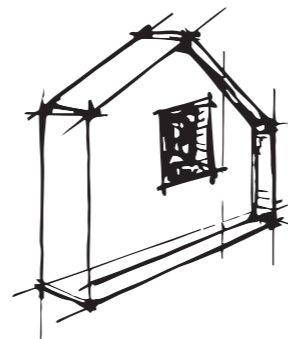
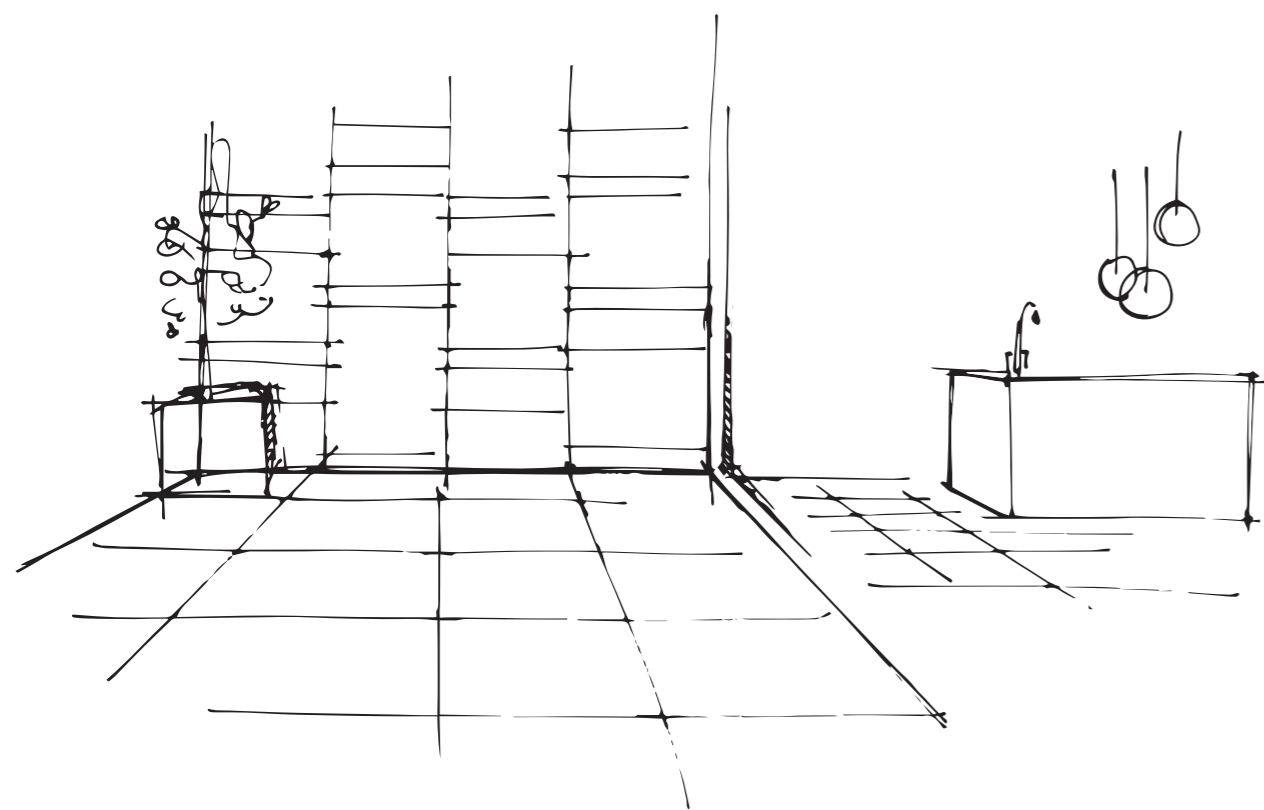
METAL  
+  
STONE



METAL  
+  
MARBLE



METAL  
+  
WOOD



Parete esterna abitazione:  
gioco di formati con lastre  
effetto ossidato di diverse dimensioni.  
Allineare ceramica con superficie  
pietra a pavimento  
Pianta fiorita in vaso

External walls, home: design featuring  
a combination of different-sized  
rust-effect slabs/  
Team ceramic slabs with stone paving  
Flowering plant in pot

RUST



Outdoor: Interno 9 Rust 60x120 - Rust Mix Sizes 60x120  
Indoor: Interno 9 Mosaico Losanga Rust 30x60 - Rust Lapp. 60x120 / 60x60



Interno 9 Rust 160x320 rett. - Native Ash 120x120 rett.



Interno 9 Rust rett. 120x280, 60x120 - Ghost Ivory 120x280 rett.

Interno 9 Rust rett. 120x280, 60x120 - Abkstone Diamond Ivory Lux 12 MM



Sensi Roma Cream nat. rett. 60x120 - Interno 9 Rust nat. rett. 60x120



Poetry Stone Carving Ecrú 60x120 - Poetry Stone Pirenei Ecrú R11 60x120 8,5 mm - Interno 9 Rust 120x280



Interno 9 Rust nat. rett. 120x280, 60x120 - Sensi 900 Precious Black Ant. 3D rett. 60x120



Sensi Gems Crystal 60x120 rett. - Crystal mix sizes 30x60 rett./lux - Atlantis List. Senape 5x60  
Interno 9 Rust 60x120 rett. - Sensi Gems Crystal 120x280 Soft - Sensi Gems Crystal 60x120 rett.

Interno 9 Rust 120x280, 60x120  
Wide&Style Mini Caribbean 60x120



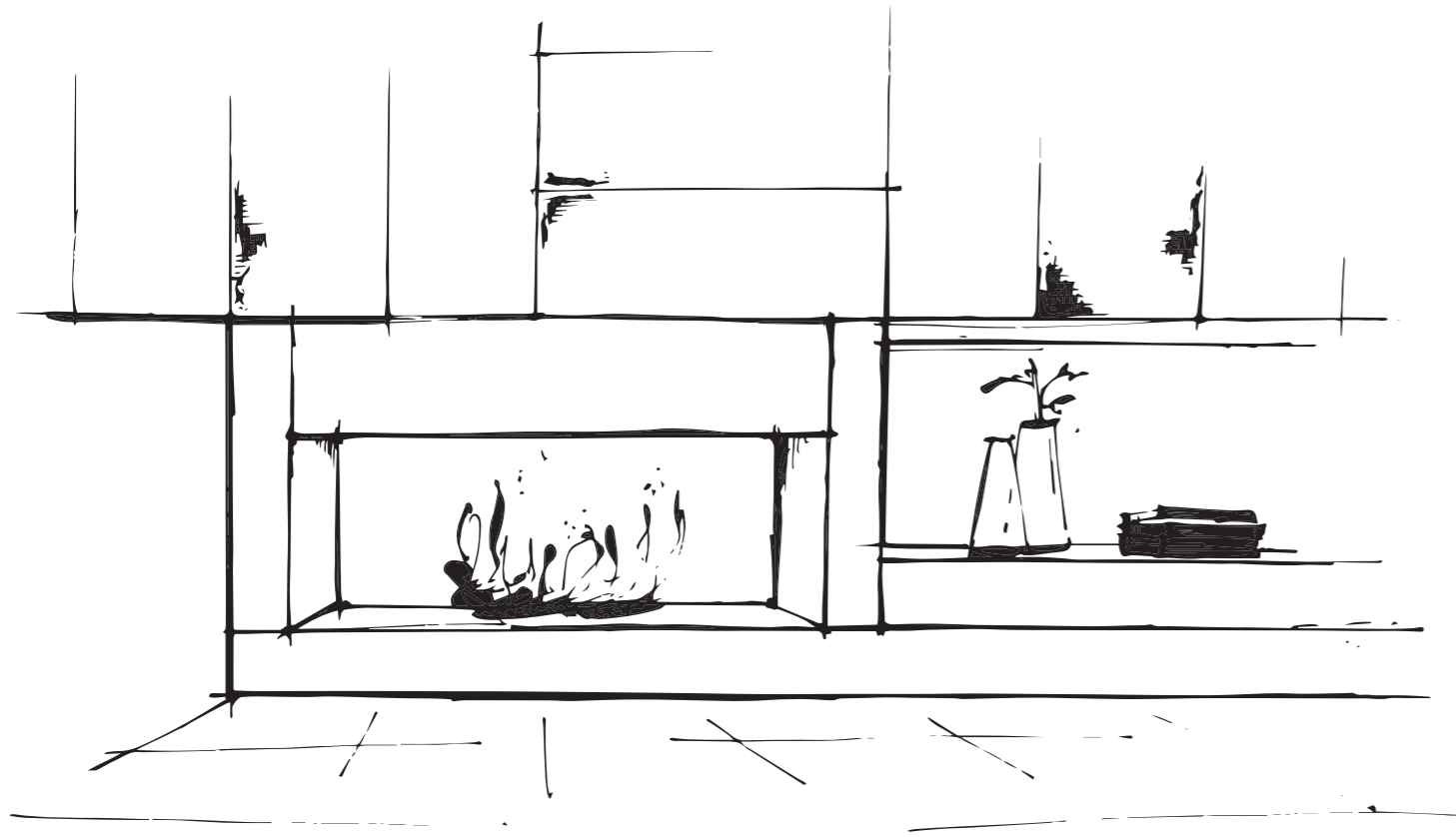
Interno 9 Rust 120x280  
Eco Chic Naturale 20x120  
Bath Design-Washbasin: Calacatta Oro Fullvein 3D Lux 20 mm



Wide&Style Rainbow Salvia 120x280 - Blend Concrete Iron 120x120  
Interno 9 Rust 160x320



# DUNE



Toni caldi e chiari per il pavimento del living, in contrasto con gli arredi scuri e la struttura camino. Prevedere base in marmo per il camino.

Warm, pale tones for the living room floor provide a stylish contrast with the dark furnishing and the fireplace feature. Include marble hearth.



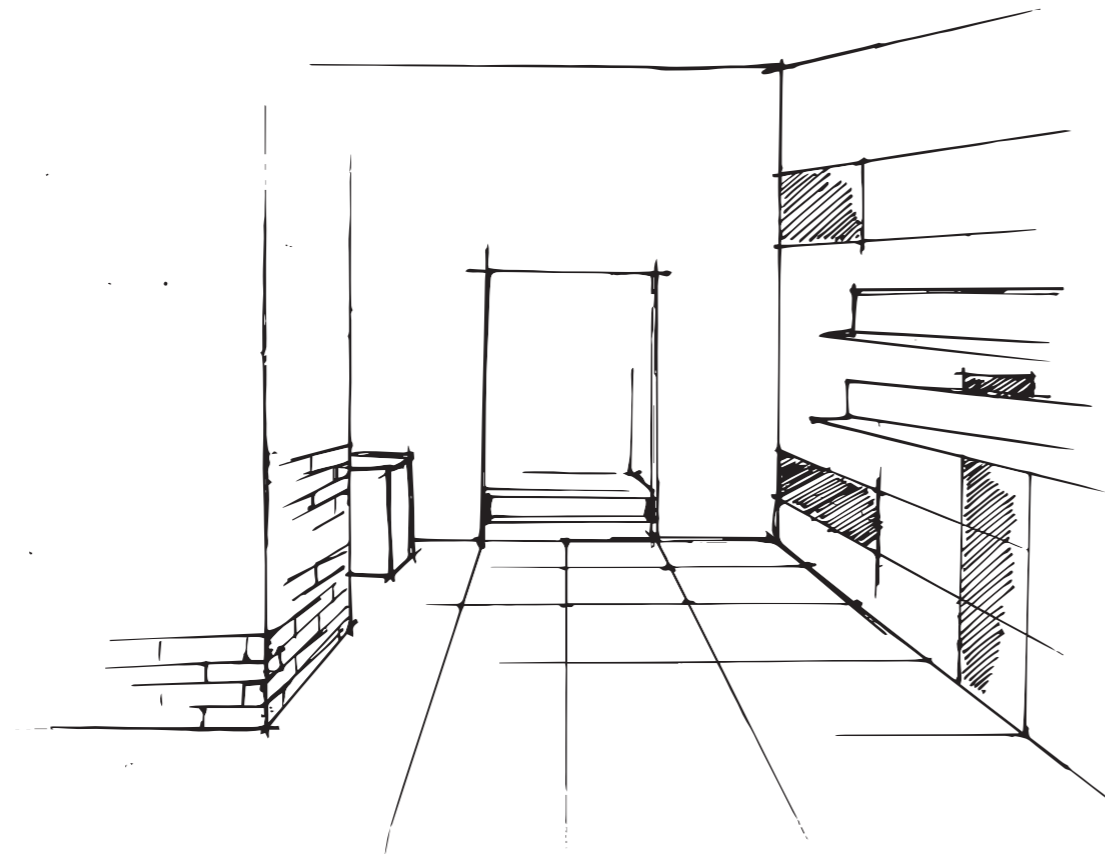


# MUD



Per showroom, al 1° piano utilizzare lastre  
effetto corten nero a pavimento e parete  
muretto 3D  
Parete espositiva: posa multiformato  
d'effetto con stecche lastre in colorazioni più calde  
Posa marmo ceramico nella parete scala  
e nella parete espositiva  
Mensole ad L in metallo color ottone  
retroilluminato

For the showroom, on the first floor,  
use black weathering steel-effect slabs on the floor  
and 3D dwarf wall effect on the walls  
Display wall: high-impact multi-site  
design with the same slabs in warmer tones  
Fit ceramic marble tiles on the walls of the  
stairway and on the display wall  
Brass-coloured metal L-shaped shelves  
with back-lighting



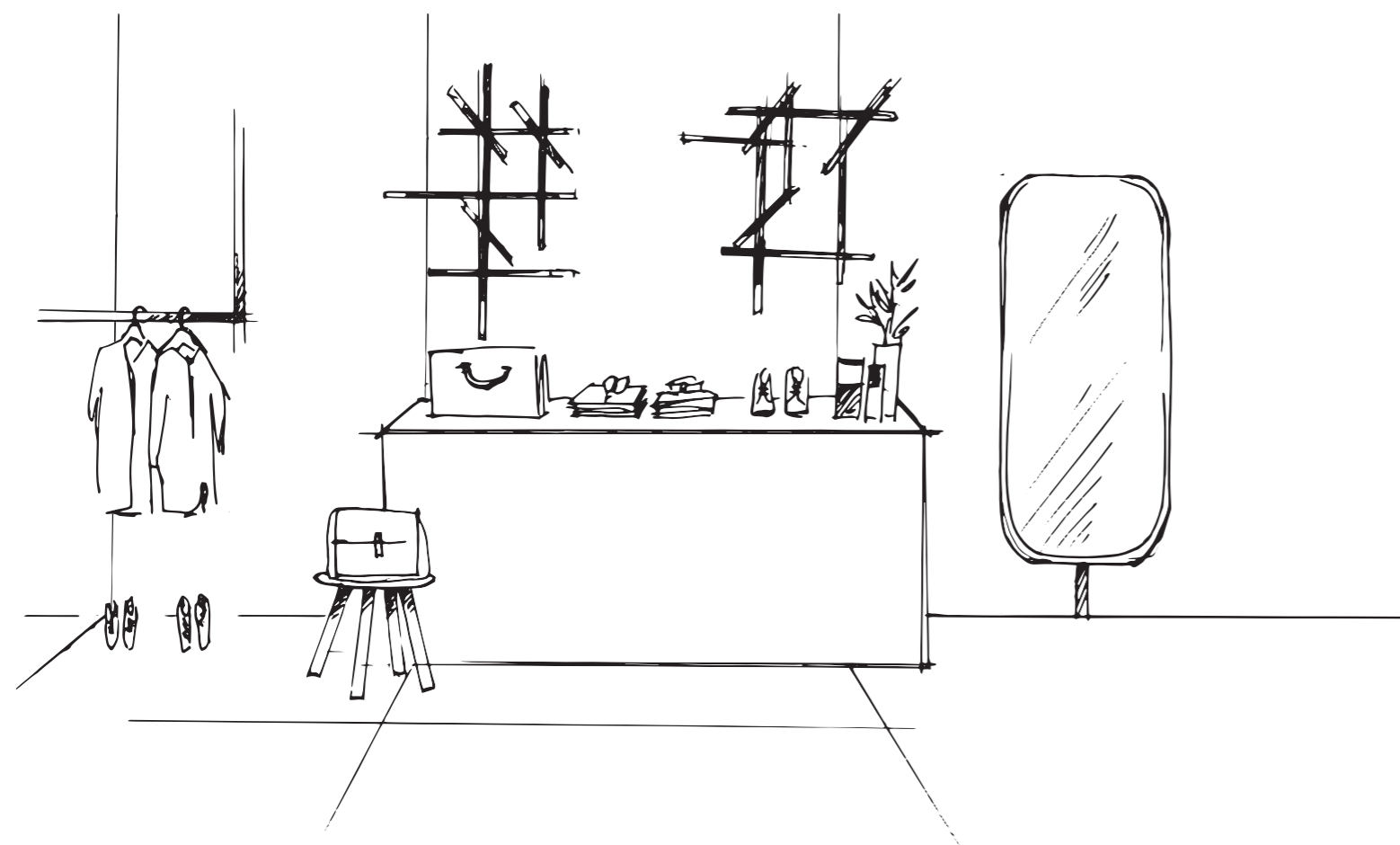


Interno 9 Mud rett. 60x120





DARK



Interno 9 Dark rett. 120x120



Interno 9 Dark rett. 60x120 - Mud Lapp. rett. 60x120

Interno 9 Dark rett. 60x120 - Gradone Top Dark rett. - Sensi Calacatta Select Sablè rett. 60x120



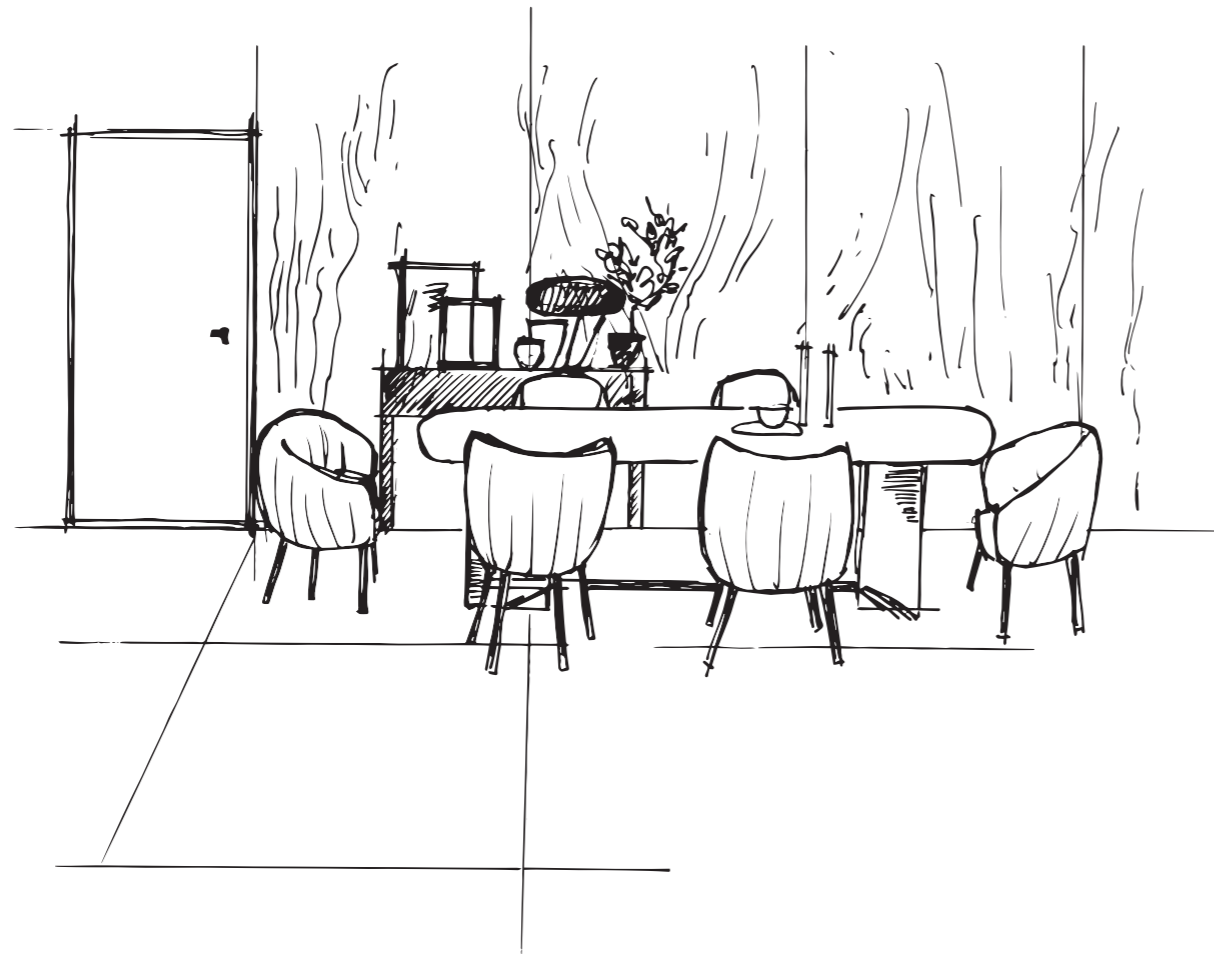
Interno 9 Mud rett. 60x120 - Interno 9 Dark rett. 60x120 - Mix Sizes rett. 60x120 - Sensi Calacatta Select Sablè rett. 60x120 - Do Up Street Black 60x120

# PEARL

Elemento soffocato molto luminoso  
Permette con poca spesa  
formare quadrato 120 x 120  
vestimento chiaro

Element bright living room  
regular living floor  
square size 120 x 120  
light color wall

Consolle nera  
dark console  
lampadario protagonista  
main chandelier





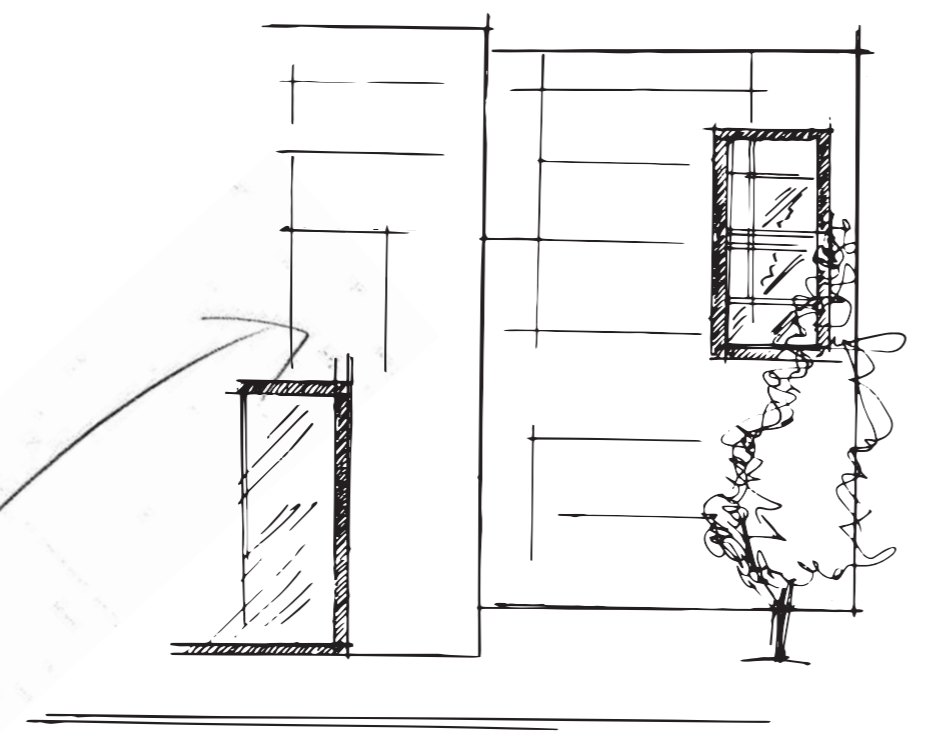
Interno 9 Pearl rett. 30x120 - Fascia Essenze mix 5x30



Indoor: interno 9 Pearl rett. 30x120  
Outdoor: Dolphin Grey Aged rett. 20x120

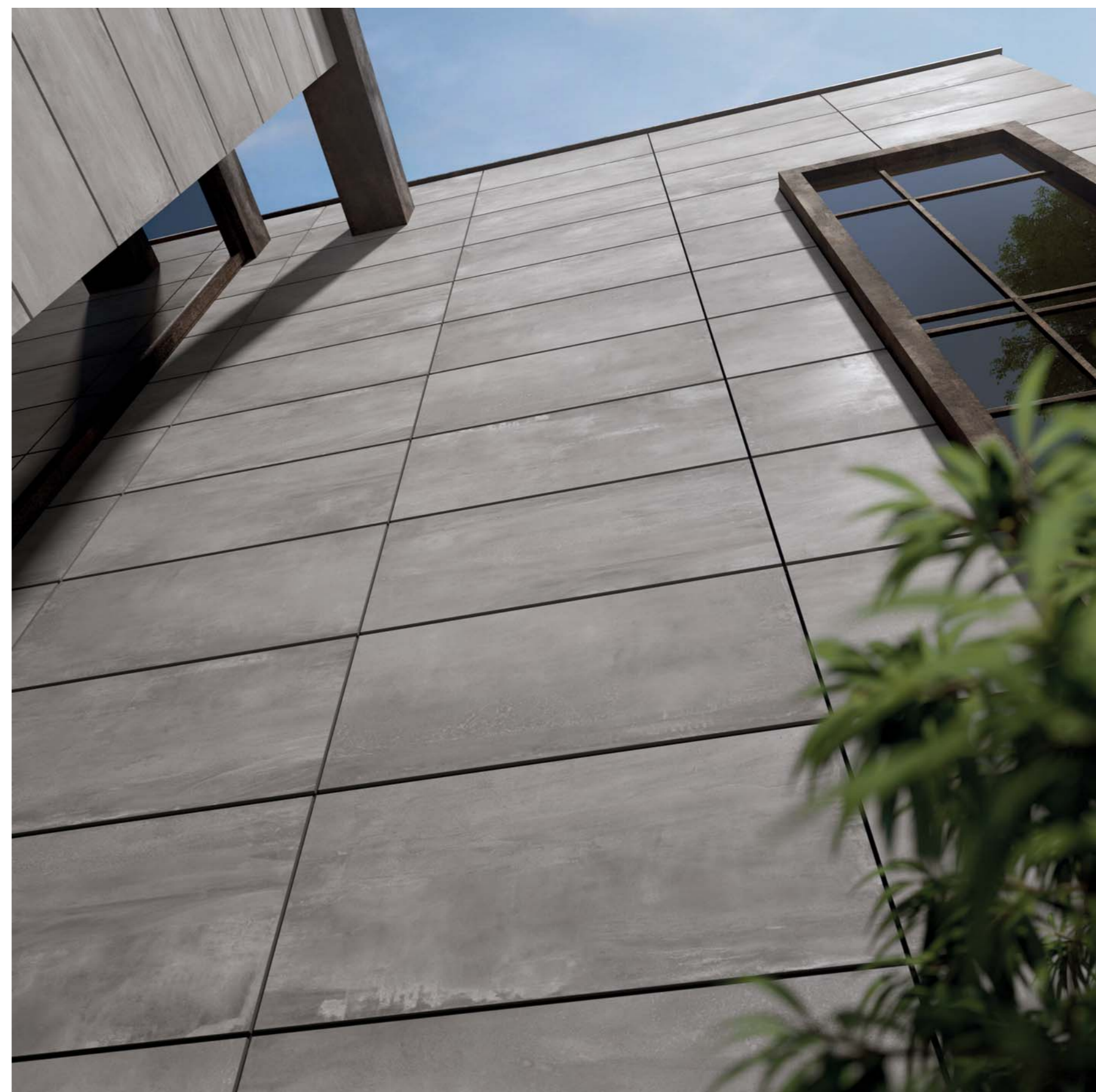


# SILVER



facciate esterne  
minimale in Csguo Silver  
~~struttura~~  
struttura fessata  
in metallo scuro

minimal external facade  
silver grey  
window with dark iron structure



Silver Lapp. rett. 60x120 - Dark rett. 60x120



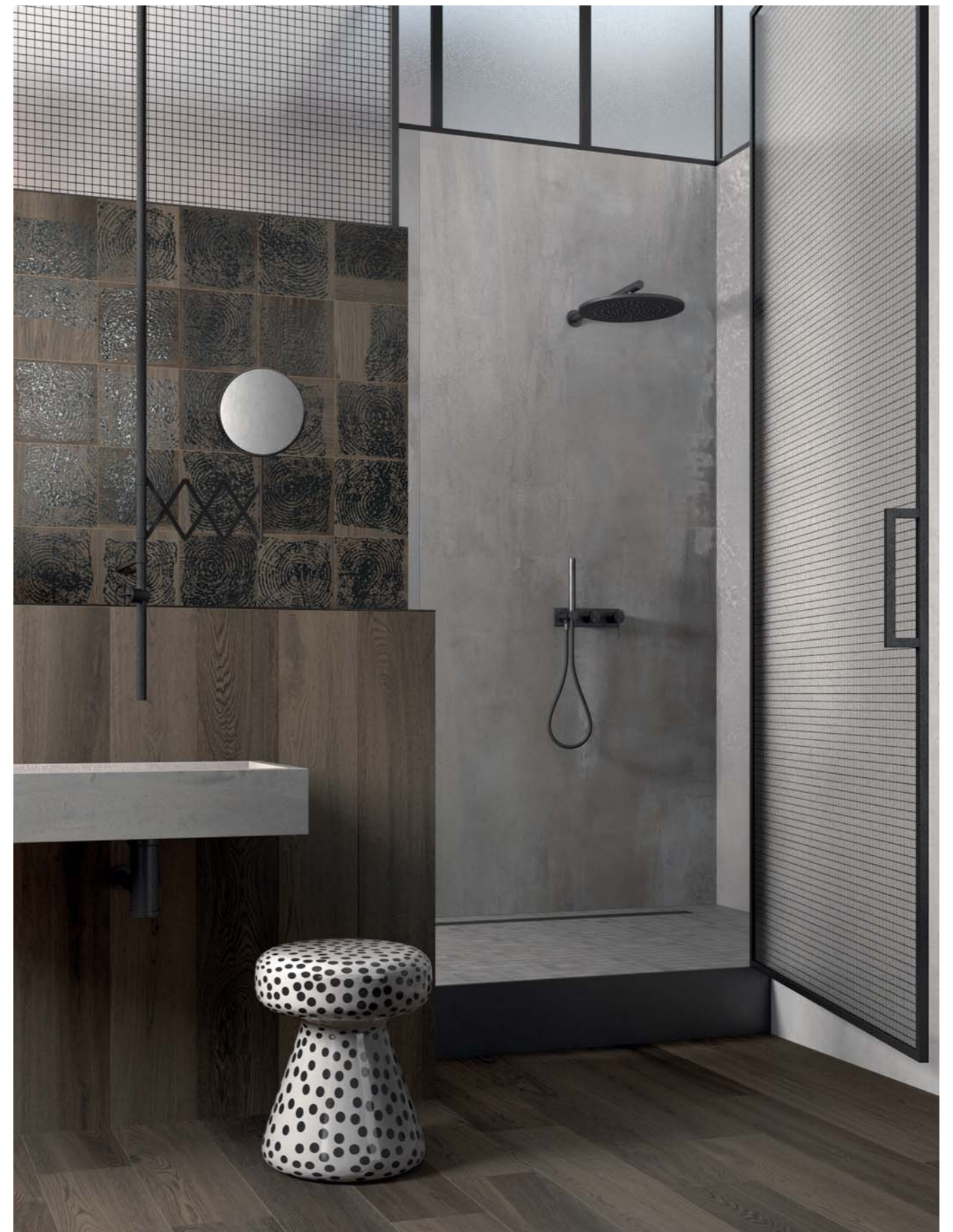
Interno 9 Silver rett. 80x160 - 120x280 - Matita alluminio rame 0,5x120 - Crossroad Wood grey rett. 20x120





Interno 9 Silver rett. 30x120 - Fascia Raku Dark mix 2 30x120

Poetry Wood Mud 20x120 - Poetry Decor Metal Mud 20x20 - Interno 9 Silver 120x280 - Mosaico 30x30



# INTERNO 9

## COLOUR AND SIZE CHART

				
WIDE	RUST	DARK	SILVER	PEARL
<b>6 mm</b>				
160x320 64"x128" nat rett.	•	•	•	
120x280 48"x112" nat rett.	•	•	•	•
120x120 48"x48" nat rett.	•	•	•	•
80x160 32"x64" nat rett.	•	•	•	•
80x80 32"x32" nat rett.	•	•	•	•

						
	RUST	DARK	SILVER	PEARL	MUD	DUNE
<b>8,5 mm</b>						
60x120 24"x48" nat rett.	•	•	•	•	•	•
60x120 24"x48" lapp rett.	•	•	•	•	•	•
30x120 12"x48" nat rett.	•	•	•	•	•	•
30x120 12"x48" lapp rett.	•	•	•	•	•	•
60x60 24"x24" nat rett.	•	•	•	•	•	•
60x60 24"x24" lapp rett.	•	•	•	•	•	•
30x60 12"x24" nat rett.	•	•	•	•	•	•

## INTERNO 9 WIDE

GRES PORCELLANATO A MASSA COLORATA  
FULL BODY COLORED PORCELAIN

### RUST

#### 6 mm

160x320	nat rett.	0000299
120x280	nat rett.	0008649

#### 8,5 mm

120x120	nat rett.	0000314
80x160	nat rett.	0000305
80x80	nat rett.	0000308

### ABKSTONE

163,5x323 nat.	0000296	± 6 mm
163,5x323 nat.	0003779	± 12 mm



### DARK

#### 6 mm

160x320	nat rett.	0000300
120x280	nat rett.	0008650

#### 8,5 mm

120x120	nat rett.	0000315
80x160	nat rett.	0000306
80x80	nat rett.	0000309

### ABKSTONE

163,5x323 nat.	0000297	± 6 mm
163,5x323 nat.	0005319	± 12 mm



# INTERNO 9 WIDE

GRES PORCELLANATO A MASSA COLORATA  
FULL BODY COLORED PORCELAIN

## SILVER

<b>6 mm</b>		
160x320	nat rett.	0000301
120x280	nat rett.	0008651
<b>8,5 mm</b>		
120x120	nat rett.	0000316
80x160	nat rett.	0000307
80x80	nat rett.	0000310

## ABKSTONE









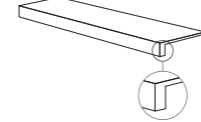



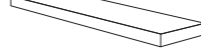

163,5x323 nat.	0000298	± 6 mm
163,5x323 nat.	0005320	± 12 mm



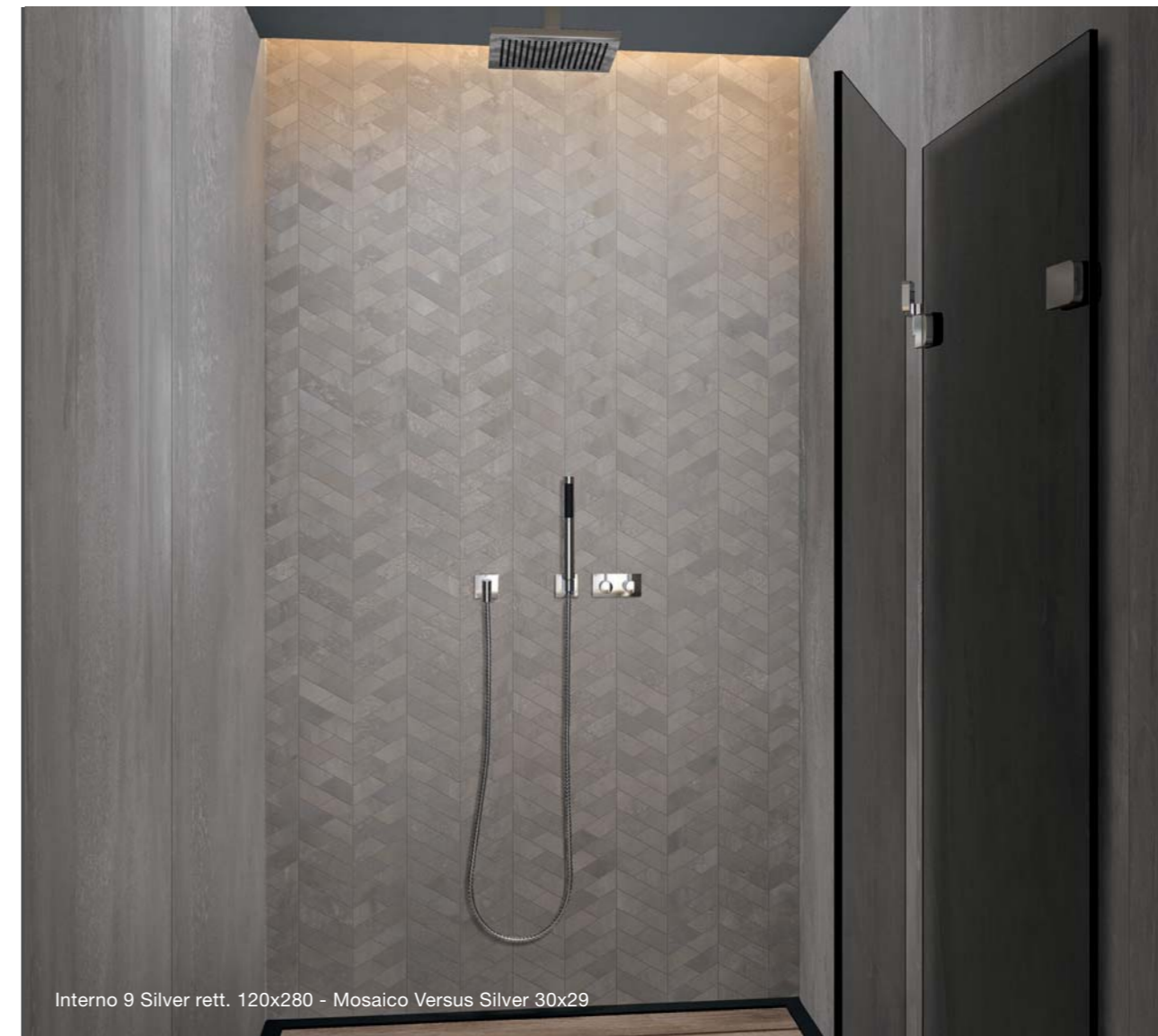
## PEARL

<b>6 mm</b>		
120x280	nat rett.	0008269
<b>8,5 mm</b>		
120x120	nat rett.	0000630
80x160	nat rett.	0000627
80x80	nat rett.	0000628



DECORI / DECORATIVE 7 mm					
	MOS. VERSUS 30x29 	RUST 0000961	DARK 0000962	SILVER 0000963	PEARL 0000964
PEZZI SPECIALI / SPECIAL TRIMS 8,5 mm		RUST	DARK	SILVER	PEARL
	* BATTISCOPIA 5,5x80 	0000720	0000721	0000722	0000723
	GRADONE TOP rett. 32x120x4,5x2 	0000724	0000725	0000726	0000727
	ANGOLARE TOP SX 32x120x4,5x2 	0000763	0000764	0000765	0000766
	ANGOLARE TOP DX 32x120x4,5x2 	0000767	0000768	0000769	0000770

\* Fino ad esaurimento scorte l' art. verrà consegnato a spessore 7 mm. The item will be delivered 7 mm thick until stocks are exhausted.



**RUST**

**8,5 mm**

60x120	nat rett.	<b>I9R34300</b>
60x120	lapp. rett.	<b>I9L34300</b>
30x120	nat rett.	<b>I9R57300</b>
30x120	lapp. rett.	<b>I9L57300</b>
60x60	nat rett.	<b>I9R01300</b>
60x60	lapp. rett.	<b>I9L01300</b>
30x60	nat rett.	<b>I9R03300</b>



**MUD**

**8,5 mm**

60x120	nat rett.	<b>I9R34250</b>
60x120	lapp. rett.	<b>I9L34250</b>
30x120	nat rett.	<b>I9R57250</b>
30x120	lapp. rett.	<b>I9L57250</b>
60x60	nat rett.	<b>I9R01250</b>
60x60	lapp. rett.	<b>I9L01250</b>
30x60	nat rett.	<b>I9R03250</b>



**DUNE**

**8,5 mm**

60x120	nat rett.	<b>I9R34100</b>
60x120	lapp. rett.	<b>I9L34100</b>
30x120	nat rett.	<b>I9R57100</b>
30x120	lapp. rett.	<b>I9L57100</b>
60x60	nat rett.	<b>I9R01100</b>
60x60	lapp. rett.	<b>I9L01100</b>
30x60	nat rett.	<b>I9R03100</b>



**DARK**

**8,5 mm**

60x120	nat rett.	<b>I9R34200</b>
60x120	lapp. rett.	<b>I9L34200</b>
30x120	nat rett.	<b>I9R57200</b>
30x120	lapp. rett.	<b>I9L57200</b>
60x60	nat rett.	<b>I9R01200</b>
60x60	lapp. rett.	<b>I9L01200</b>
30x60	nat rett.	<b>I9R03200</b>



# INTERNO 9

GRES PORCELLANATO A MASSA COLORATA  
FULL BODY COLORED PORCELAIN

## SILVER

8,5 mm

60x120	nat rett.	<b>I9R34150</b>
60x120	lapp. rett.	<b>I9L34150</b>
30x120	nat rett.	<b>I9R57150</b>
30x120	lapp. rett.	<b>I9L57150</b>
60x60	nat rett.	<b>I9R01150</b>
60x60	lapp. rett.	<b>I9L01150</b>
30x60	nat rett.	<b>I9R03150</b>



## PEARL

8,5 mm

60x120	nat rett.	<b>I9R34050</b>
60x120	lapp. rett.	<b>I9L34050</b>
30x120	nat rett.	<b>I9R57050</b>
30x120	lapp. rett.	<b>I9L57050</b>
60x60	nat rett.	<b>I9R01050</b>
60x60	lapp. rett.	<b>I9L01050</b>
30x60	nat rett.	<b>I9R03050</b>



## DUO COLD

8,5 mm

* 60x60	nat rett.	<b>I9R01160</b>
---------	-----------	-----------------

\* Articolo composto da pattern grafici diversi che non prevedono agganci tra loro e miscelati in modo casuale in fase di inscatolamento. Non si garantisce pertanto la presenza costante di tutti i soggetti all'interno delle confezioni.  
This article comes in several different versions with unconnected patterns that are mixed randomly at the time of packaging. There is therefore no guarantee that all patterns will be present in any individual box.



Interno 9 Silver 60x120 rett. - Duo Cold 60x60 rett.



DECORI DA RIVESTIMENTO - WALL DECORS



30x120 ☞ 2  
FASCIA RAKU DARK MIX 2  
**I9R57051** (prezzo al pz)  
(Metalli preziosi - Precious metals)



19,5x8,5 ☞ 4  
LOSANGA RAKU MIX  
**I9R03052**



DECORI DA RIVESTIMENTO E DA PAVIMENTO  
WALL AND FLOOR DECORS



5x30 ☞ 4  
\* FASCIA ESSENZE MIX  
**I9R03053**  
(Legno - Wood)



4x30 ☞ 4  
\* FASCIA ARDESIA GRIGIO  
**RER09204**  
(Pietra naturale - Natural stone)



4x30 ☞ 4  
\* FASCIA ARDESIA BRONZO  
**RER09054**  
(Pietra naturale - Natural stone)

\* Art. realizzati con materiali naturali  
Items produced with natural materials

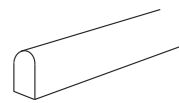


DECORI / DECORATIVE 8,5 mm	RUST	MUD	DUNE	DARK	SILVER	PEARL
MOS. LOSANGA rett. 30x60 ☞ 4	<b>I9R03301</b>	<b>I9R03251</b>	<b>I9R03101</b>	<b>I9R03201</b>	<b>I9R03151</b>	<b>I9R03051</b>
MOS. QUADRETTI rett. 30x30 ☞ 4	<b>I9R09301</b>	<b>I9R09251</b>	<b>I9R09101</b>	<b>I9R09201</b>	<b>I9R09151</b>	<b>I9R09051</b>
MIX SIZES 60x120 ☞ 2	<b>I9R34310</b>	<b>I9R34260</b>	<b>I9R34110</b>	<b>I9R34210</b>	<b>I9R34160</b>	<b>I9R34060</b>
Pcs box: 30x120 ☞ 2 20x120 ☞ 2 10x120 ☞ 2						

PEZZI SPECIALI / SPECIAL TRIMS 8,5 mm	RUST	MUD	DUNE	DARK	SILVER	PEARL
BATTISCOPA rett. 5,5x60 ☞ 10	<b>I9R01302</b>	<b>I9R01252</b>	<b>I9R01102</b>	<b>I9R01202</b>	<b>I9R01152</b>	<b>I9R01052</b>
GRADONE TOP rett. 32x120x4,5x2 ☞ 1	<b>I9R34301</b>	<b>I9R34251</b>	<b>I9R34101</b>	<b>I9R34201</b>	<b>I9R34151</b>	<b>I9R34051</b>
ANGOLARE TOP SX 32x120x4,5x2 ☞ 1	<b>I9R34302</b>	<b>I9R34252</b>	<b>I9R34102</b>	<b>I9R34202</b>	<b>I9R34152</b>	<b>I9R34052</b>
ANGOLARE TOP DX 32x120x4,5x2 ☞ 1	<b>I9R34303</b>	<b>I9R34253</b>	<b>I9R34103</b>	<b>I9R34203</b>	<b>I9R34153</b>	<b>I9R34053</b>

MATITE ALLUMINIO - ALUMINIUM STRIPS

Articoli realizzati in alluminio anodizzato per l'uso a parete, adatti a raccordare piastrelle di diverso spessore (8,5/7/6 mm).  
Anodized Aluminium strips for use between wall tiles of different thicknesses (8,5/7/6 mm).



MATITA ALLUMINIO 0,5x120 ☞ 4  
Parte superiore arrotondata / Rounded top.



Parte superiore arrotondata e colorata con resine acriliche.  
Rounded top colored with acrylic resins.



MATITA ALLUM. WHITE  
**0000087**



MATITA ALLUM. TERRACOTTA  
**0008530**



MATITA ALLUM. BLU  
**0008532**



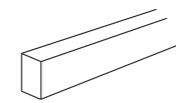
MATITA ALLUM. VERDE  
**0008531**



MATITA ALLUM. ARDESIA  
**0008533**



MATITA ALLUM. BLACK  
**0000088**



MATITA ALLUMINIO 0,5x120 ☞ 4  
Parte superiore piatta colorata in bagno galvanico / Flat top colored in galvanic bath.



MATITA ALLUM. BRONZO  
**0000557**



MATITA ALLUM. RAME  
**0000556**


## CARATTERISTICHE TECNICHE TECHNICAL FEATURES

CLASSIFICAZIONE SECONDO NORME UNI EN 14411 (ISO 13006) ALLEGATO G-Gruppo Bla GL  
CLASSIFICATION IN ACCORDANCE WITH UNI EN 14411 (ISO 13006) ANNEX G-Group Bla GL

### GRES PORCELLANATO A MASSA COLORATA / FULL BODY COLORED PORCELAIN

PROPRIETÀ FISICO-CHIMICHE PHYSICAL-CHEMICAL PROPERTIES	NORMA NORM	VALORE PRESCRITTO DALLE NORME VALUE PRESCRIBED FROM THE NORMS	* VALORE ABK ABK VALUE INTERNO 9 NAT.
LUNGHEZZA E LARGHEZZA DIMENSIONE MEDIA DI OGNI PIASTRELLA LENGTH AND WIDTH OF THE AVERAGE-SIZES TILE	UNI EN ISO 10545/2	± 0,6%	CONFORME ACCORDING TO
SPESSORE THICKNESS	UNI EN ISO 10545/2	± 5%	CONFORME ACCORDING TO
RETTILINEARITÀ SPIGOLI WARPAGES OF EDGES	UNI EN ISO 10545/2	± 0,5%	CONFORME ACCORDING TO
ORTOGONALITÀ WEDGING	UNI EN ISO 10545/2	± 0,6%	CONFORME ACCORDING TO
PLANARITÀ FLATNESS	UNI EN ISO 10545/2	± 0,5%	CONFORME ACCORDING TO
ASSORBIMENTO D'ACQUA WATER ABSORPTION	UNI EN ISO 10545/3	E ≤ 0,5%	CONFORME ACCORDING TO
RESISTENZA ALLA FLESSIONE BENDING STRENGTH	UNI EN ISO 10545/4	≥ 35 N/mm <sup>2</sup>	CONFORME ACCORDING TO
FORZA DI ROTTURA BREAKING STRENGTH	UNI EN ISO 10545/4	Thickness ≥ 7,5 mm: Min 1300 N Thickness < 7,5 mm: Min 700 N	CONFORME ACCORDING TO
RESISTENZA ALL'ABRASIONE SUPERFICIALE PER PIASTRELLE SMALTATE ABRASION RESISTANCE FOR GLAZED TILES	UNI EN ISO 10545/7	DICHIARATO DALL'AZIENDA PRODUTTRICE DECLARED BY THE MANUFACTURING COMPANY	IN FUNZIONE DELLA DESTINAZIONE D'USO ACCORDING TO THE DESTINATION OF FINAL USE
RESISTENZA AGLI SBALZI TERMICI THERMAL SHOCK RESISTANCE	UNI EN ISO 10545/9	RICHIESTA REQUIRED	RESISTE RESISTS
RESISTENZA AL GELO FROST RESISTANCE	UNI EN ISO 10545/12	RICHIESTA REQUIRED	INGELIVO FROST PROOF
RESISTENZA ALL'ATTACCO CHIMICO CHEMICAL RESISTANCE	UNI EN ISO 10545/13	MIN GB	CONFORME ACCORDING TO
RESISTENZA ALLE MACCHIE RESISTANCE TO STAINING	UNI EN ISO 10545/14	GL ≥ MINIMO CLASSE 3	CONFORME ACCORDING TO
RESISTENZA ALLO SCIVOLAMENTO SLIP RESISTANCE	B.C.R.A. C.A.	μ 0,19 SCIVOLOSITÀ PERICOLOSA - DANGEROUSLY SLIPPERY 0,20 < μ < 0,39 SCIVOLOSITÀ ECCESSIVA - EXCESSIVELY SLIPPERY	> 0,40
	B.C.R.A. G.B.	0,40 < μ < 0,74 ATTRITO SODDISFACENTE - SATISFACTORY GRIP μ 0,75 ATTRITO ECCELLENTE - EXCELLENT GRIP	> 0,40
	ASTM C 1028 (S.C.O.F.)	SUP RESISTANT (> 0,60)	> 0,60 DRY > 0,60 WET
	DIN 51130	IN FUNZIONE DELL'AMBIENTE O DELLA ZONA DI LAVORO BASING ON THE ENVIRONMENT OR THE WORKING AREA	R10
	DIN 51097	-	A+B
	ANSI A 137-1:2012	≥ 0,42	> 0,42

\* Valori medi di produzione / Average production values

VARIAZIONE CROMATICA SHADE VARIATION	V3	 V1	 V2	 V3	 V4
---	----	--	--	---	--

## IMBALLI/PACKAGING

F.to nominale Nominal size	Finitura Finish	Spessore Thickness	F.to reale (mm) Work size (mm)	Imballo Packing	Pz/Scat. Pcs/Box	Mq/Scat. Sqm/Box	Kg/Scat. Kg/Box	Scat./Imb. Box/Pack.	Pz Totali Pcs Total	Mq totali Sqm total	Kg Imb. Kg Packing	Kg Totali Kg Total
160x320 64"x128"	rett	6	1596,5x3195	Cassa Crate	-	-	-	-	15	76,80	139	1.294
				Cavalletto container Container Rack pallet	-	-	-	-	36	184,32	180	2.952
120x280 48"x112"	rett	6	1194x2800	Cassa Crate	-	-	-	-	20	67,20	95	1.104
				Cavalletto Rack pallet	-	-	-	-	36	121,00	120	1.935
				Cavalletto container Container Rack pallet	-	-	-	-	36	121,00	140	1.955
80x160 32"x64"	rett.	8,5	797,25x1596,5	Cavalletto Rack pallet	2	2,56	51,20	22	44	56,32	70	1.196
				Pallet con sponde Pallet with sides	2	2,56	51,20	22	44	56,32	40	1.166
120x120 48"x48"	rett.	8,5	1194x1194	Pallet con sponde Pallet with sides	2	2,88	57,60	16	32	46,08	40	962
60x120 24"x48"	rett.	8,5	596x1194	pallet	2	1,44	28,80	30	60	43,20	20	884
60x120 mix sizes	rett.	8,5	596x1194	pallet	2	1,44	28,80	26	52	37,44	20	769
30x120 12"x48"	rett.	8,5	297x1194	pallet	4	1,44	28,80	36	144	51,84	20	1.057
80x80 32"x32"	rett.	8,5	797,25x797,25	pallet	2	1,28	25,60	48	96	61,44	20	1.249
60x60 24"x24"	rett.	8,5	596x596	pallet	3	1,08	21,60	40	120	43,20	20	884
30x60 12"x24"	rett.	8,5	297x596	pallet	6	1,08	21,60	40	240	43,20	20	884

L'unità minima di vendita per tutti gli articoli (fondi, decori e pezzi speciali) è la scatola completa. / The minimum sales quantity for all items (plain tiles, decorations and special trims) is one full box. I dati relativi agli imballi sono aggiornati al momento della stampa del catalogo e pertanto possono subire variazioni nel corso del tempo. / Data referring to packaging have been update at time of printing; the actual data may be slightly different.

Pezzi speciali e decori per effetto delle lavorazioni, possono presentare variazioni di tonalità. / Due to working process special trims and decors, may show variation in tonality.

**Le caratteristiche di superficie e le tonalità dei prodotti ceramici illustrati in questo catalogo sono da ritenersi puramente indicative.  
Optical features and color shades of ceramic materials illustrated in this catalogue are to be regarded as mere indications.**

Marketing ABK Group  
Direfarecreare.it  
237

ABK  
Brand of ABK Group Industrie Ceramiche s.p.a. - via S.Lorenzo N.24/a - 41034 Finale Emilia - Modena Italy  
tel. 0535 761311 - fax 0535 761320/92800/761351

[www.abk.it](http://www.abk.it)  
#abkemozioni

WE  
ARE ABK  
GROUP



**ABK**

EMOZIONI IN SUPERFICIE

WE  
ARE **ABK**  
GROUP